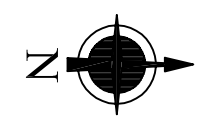
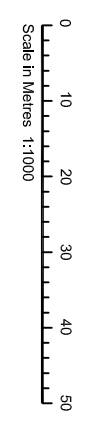
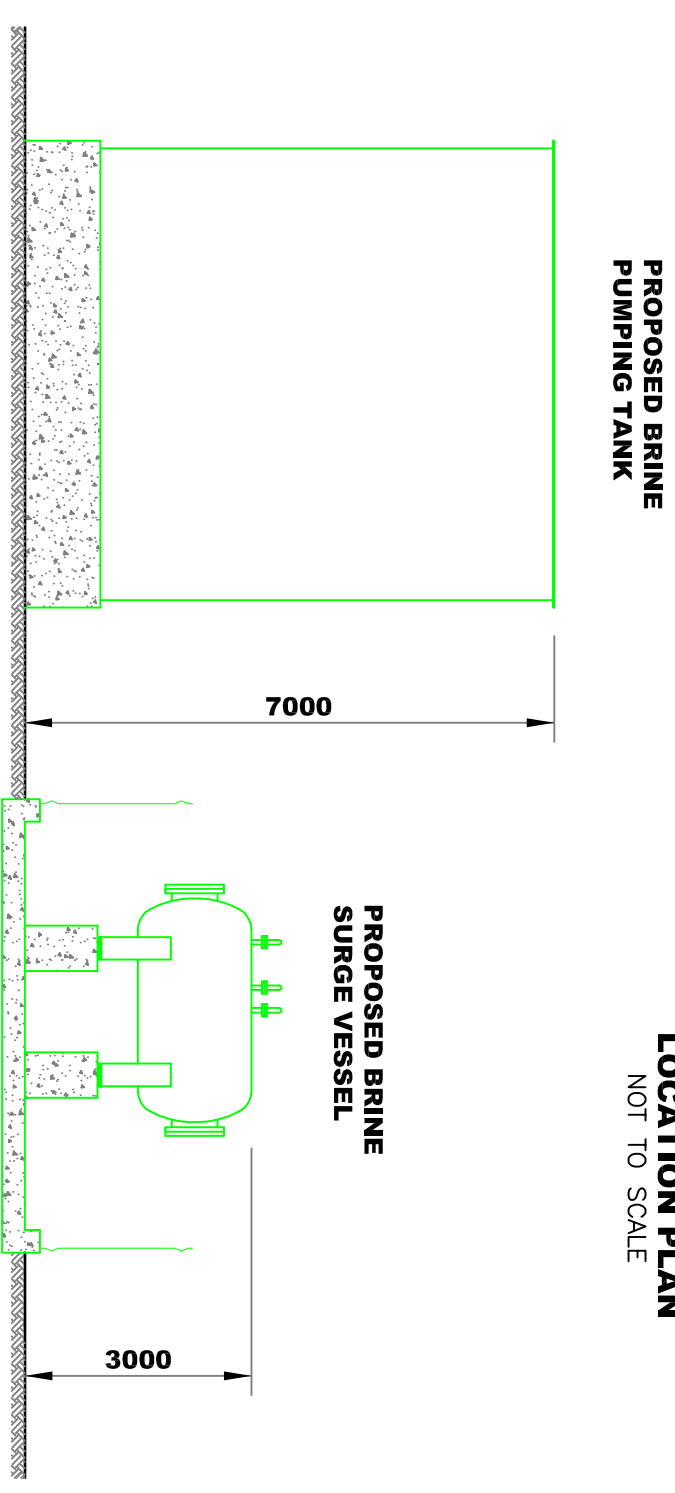
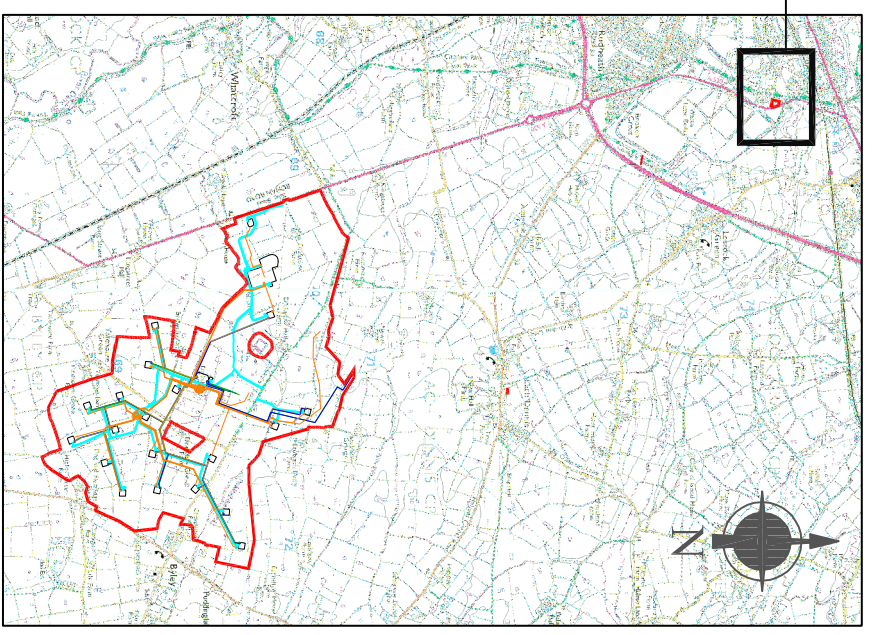


PART PLAN ON LOSTOCK BRINE PURIFICATION PLANT
1:1000



LEGEND

- NEW INFRASTRUCTURE
- THE ORDER LIMITS
- INEOS LAND OWNERSHIP



**ELEVATION LOOKING WEST
(EXISTING TANK OMITTED FOR CLARITY)**
1:100

LOSTOCK BRINE PURIFICATION PLANT - KGSP - NEW TANKS

TITLE		LOSTOCK BRINE PURIFICATION PLANT - KGSP - NEW TANKS	
REV	DESCRIPTION	CHKD BY	DATE
B1	FOR DCO APPLICATION ALTERATIONS	RDS	26.10.2015
<p>THIS DRAWING IS PRIVATE AND CONFIDENTIAL, AND IS THE PROPERTY OF KEUPER GAS STORAGE LIMITED. IT MUST NOT BE COPIED OR LENT WITHOUT THE CONSENT OF KEUPER GAS STORAGE LIMITED. BRINE AND WATER SECTION AND MUST BE RETURNED WITH TENDER AND / OR ON COMPLETION OF ORDER.</p>			
<p>KEUPER GAS STORAGE LIMITED BRINE AND WATER SECTION, NORTHWICH SITES, HOLFORD BRINEFIELD, LOSTOCK GRALAM, NORTHWICH, CHESHIRE, CW9 7TD.</p>		<p>THIS DRAWING HAS BEEN GENERATED USING CAD BUT UNDER NO CIRCUMSTANCES SHOULD REVISIONS BE MADE TO THE DRAWING EXCEPT BY UPDATING THE CAD MASTER IMAGE. IF ANY DOUBT EXISTS PLEASE CONTACT HOLFORD DRAWING OFFICE FOR CONFIRMATION OF CURRENT DRAWING STATUS.</p>	
DATE	APPROVED BY	ACG. No.	SCALE
02/02/2015	C		1:1000 1:100
CHECKED BY	PLANT REF	APPLICATION NUMBER	SIZE
RDS		EN030002	A3
DATE	NSI	EXT.	REV
02/02/2015	E		B1
DRAWING No.		13-03-01/HOL/24/234	